

■ 片式三端陶瓷滤波电容器(EMI)
THREE TERMINATIONS CHIP CERAMIC FILTERING CAPACITOR(EMI)

● 特性：

- * 具有优良的通流特性
- * 无极性，适合高密度的表面安装
- * 具有优良的滤波特性
- * 具有良好的吸收噪音、抑制浪涌脉 的作用
- * 具有良好的可焊与耐焊性能

● FEATURE：

- * Excellent performance in high current applications
- * Non-polar,high-density surface mounting
- * Superior filtering characteristics
- * Super to absorb noise and restrain surge pulse
- * Offers good solder-ability and leach-ability
- *

● 应用范围：

- * 移动电话及基站
- * 通信设备
- * 自动化仪表和程序控制器
- * 汽车电子
- * 计算机及外围设备

● APPLICATIONS：

- * Cellular telephones and base stations
- * Telecommunication equipment
- * Industrial electronic interface of programmable controllers
- Electronic automotive equipment for car
- * Computer and peripheral equipment
- *

● 结构及尺寸 STRUCTURE AND DIMENSIONS OF EMI

* 结构 STRUCTURE

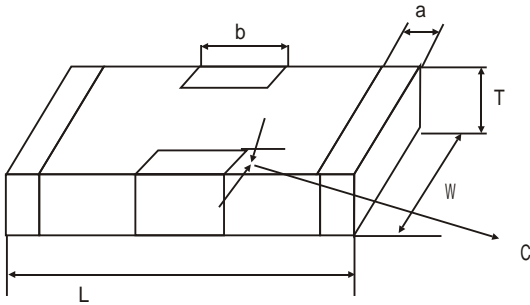


Figure 1: 外形图/Outline figure

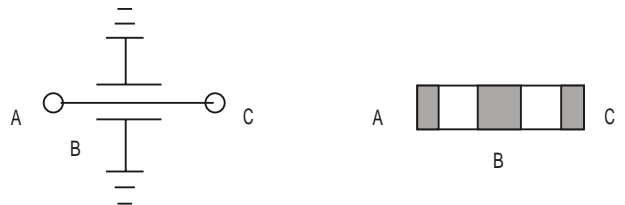


Figure 2: 原理图/Theory figure

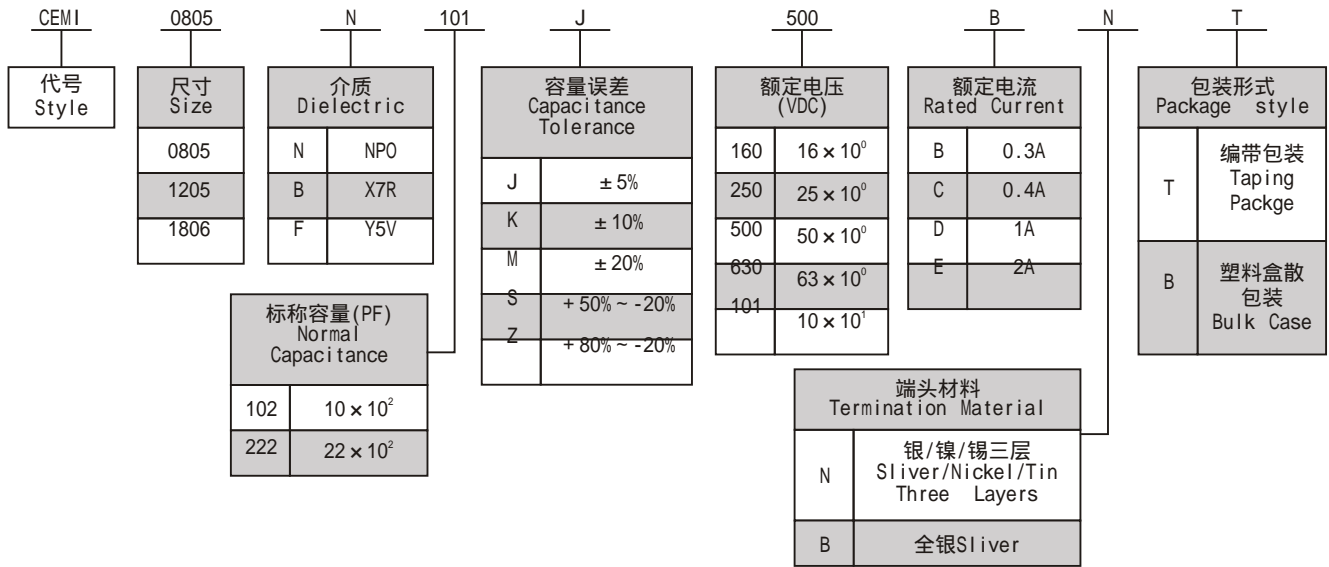
● 尺寸 DIMENSIONS

unit: mm

| 项目 规格 Size | 长(L) | 宽(L) | 厚(L) | 端头厚度(a) Termination Thickness | 第三端宽度(b) Third Termination Width | 第三端头宽度(c) Third Termination Thickness |
|------------------|-------------|-------------|-------------|-------------------------------------|--|---|
| 0805 | 2.00 ± 0.20 | 1.25 ± 0.20 | 0.80 ± 0.20 | 0.25 ± 0.10 | 0.60 ± 0.20 | 0.25 ± 0.15 |
| 1205 | 3.20 ± 0.20 | 1.25 ± 0.20 | 0.70 ± 0.20 | 0.30 ± 0.20 | 1.10 ± 0.30 | 0.25 ± 0.20 |
| 1806 | 4.50 ± 0.30 | 1.60 ± 0.20 | 1.00 ± 0.20 | 0.40 ± 0.30 | 1.50 ± 0.30 | 0.30 ± 0.20 |



• 订货方式 HOW TO ORDER

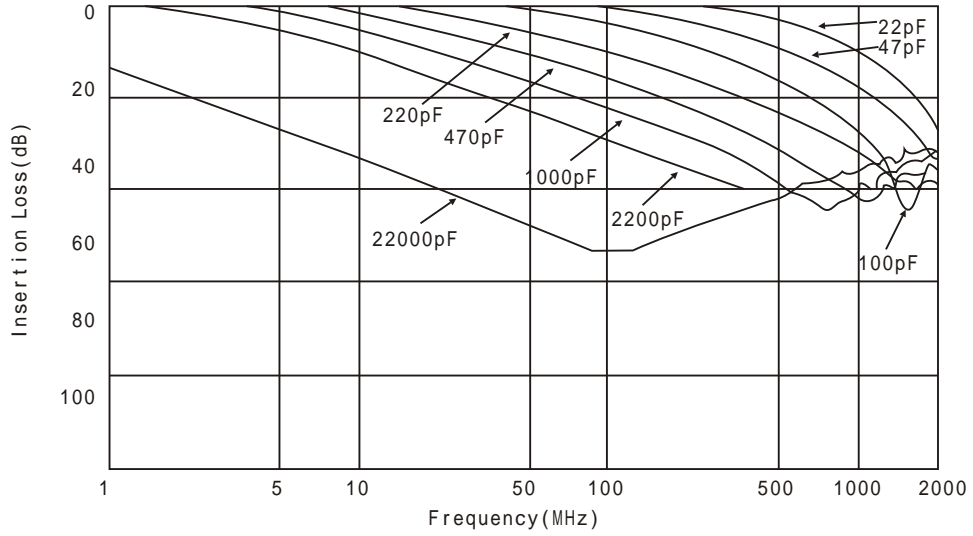


• 产品系列 PRODUCT SERIES

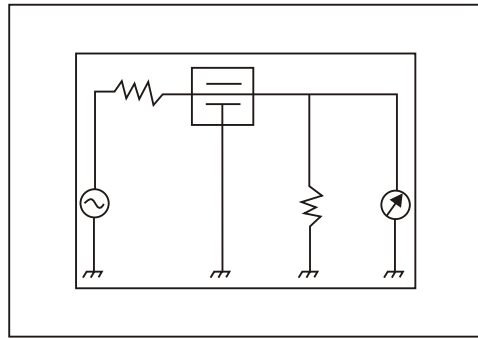
| 产品代号 Part number | 尺寸规格 Body size | 容量 Cap (PF) | 容量误差 Cap. Tol | 温度特性 TC | 额定电压 Rated Voltage V(DC) | 额定电流 Rated Current A(DC) | 绝缘电阻 IR (M min) | 直流电阻 Rd () | 工作温度范围 Operating Temp Range |
|---------------------|-------------------|----------------|------------------|------------|-----------------------------|-----------------------------|--------------------|----------------|--------------------------------|
| CEMI0805N220S500CNT | 0805 | 22 | + 50/- 20% | COG | 50 | 0.4 | 10,000 | 0.3 | -55 ~ + 125 |
| CEMI0805N470S500CNT | 0805 | 47 | + 50/- 20% | COG | 50 | 0.4 | 10,000 | 0.3 | -55 ~ + 125 |
| CEMI0805N101S500CNT | 0805 | 100 | + 50/- 20% | COG | 50 | 0.4 | 10,000 | 0.3 | -55 ~ + 125 |
| CEMI0805N221S500CNT | 0805 | 100 | + 50/- 20% | COG | 50 | 0.4 | 10,000 | 0.3 | -55 ~ + 125 |
| CEMI0805B471S500CNT | 0805 | 470 | + 50/- 20% | X7R | 50 | 0.4 | 10,000 | 0.3 | -55 ~ + 125 |
| CEMI0805B102S500CNT | 0805 | 1000 | + 50/- 20% | X7R | 50 | 0.4 | 10,000 | 0.3 | -55 ~ + 125 |
| CEMI0805B222S500CNT | 0805 | 2200 | + 50/- 20% | X7R | 50 | 0.4 | 10,000 | 0.3 | -55 ~ + 125 |
| CEMI0805B223S500CNT | 0805 | 22000 | + 50/- 20% | X7R | 50 | 1.0 | 10,000 | 0.8 | -55 ~ + 125 |
| CEMI1205N220S500BNT | 1205 | 22 | + 50/- 20% | COG | 50 | 0.3 | 10,000 | 0.3 | -55 ~ + 125 |
| CEMI1205N470S500BNT | 1205 | 47 | + 50/- 20% | COG | 50 | 0.3 | 10,000 | 0.3 | -55 ~ + 125 |
| CEMI1205N101S500BNT | 1205 | 100 | + 50/- 20% | COG | 50 | 0.3 | 10,000 | 0.3 | -55 ~ + 125 |
| CEMI1205N221S500BNT | 1205 | 220 | + 50/- 20% | COG | 50 | 0.3 | 10,000 | 0.3 | -55 ~ + 125 |
| CEMI1205B471S500BNT | 1205 | 470 | + 50/- 20% | X7R | 50 | 0.3 | 10,000 | 0.3 | -55 ~ + 125 |
| CEMI1205B102S500BNT | 1205 | 1000 | + 50/- 20% | X7R | 50 | 0.3 | 10,000 | 0.3 | -55 ~ + 125 |
| CEMI1205B222S500BNT | 1205 | 2200 | + 50/- 20% | X7R | 50 | 0.3 | 10,000 | 0.3 | -55 ~ + 125 |
| CEMI1205B223S500BNT | 1205 | 22000 | + 50/- 20% | X7R | 50 | 0.3 | 10,000 | 0.3 | -55 ~ + 125 |
| CEMI1205B473S500BNT | 1205 | 47000 | + 50/- 20% | X7R | 50 | 1.0 | 5,000 | 0.8 | -55 ~ + 125 |
| CEMI1806F224Z500ENT | 1806 | 220000 | + 50/- 20% | Y5V | 100 | 2.0 | 1,000 | 0.4 | -55 ~ + 125 |
| CEMI1806N220S101BNT | 1806 | 22 | + 50/- 20% | COG | 100 | 0.3 | 10,000 | 0.3 | -25 ~ + 85 |
| CEMI1806N470S101BNT | 1806 | 47 | + 50/- 20% | COG | 100 | 0.3 | 10,000 | 0.3 | -55 ~ + 125 |
| CEMI1806N101S101BNT | 1806 | 100 | + 50/- 20% | COG | 100 | 0.3 | 10,000 | 0.3 | -55 ~ + 125 |
| CEMI1806N221S101BNT | 1806 | 220 | + 50/- 20% | COG | 100 | 0.3 | 10,000 | 0.3 | -55 ~ + 125 |
| CEMI1806B471S101BNT | 1806 | 470 | + 50/- 20% | X7R | 100 | 0.3 | 10,000 | 0.3 | -55 ~ + 125 |
| CEMI1806B102S101BNT | 1806 | 1000 | + 50/- 20% | X7R | 100 | 0.3 | 10,000 | 0.3 | -55 ~ + 125 |
| CEMI1806B222S101BNT | 1806 | 2200 | + 50/- 20% | X7R | 100 | 0.3 | 10,000 | 0.3 | -55 ~ + 125 |
| CEMI1806B223S101BNT | 1806 | 22000 | + 50/- 20% | X7R | 100 | 0.3 | 10,000 | 0.4 | -55 ~ + 125 |
| | | | + 50/- 20% | | | | | | -55 ~ + 125 |
| | | | + 50/- 20% | | | | | | -55 ~ + 125 |
| | | | | | | | | | |
| | | | | | | | | | |
| | | | | | | | | | |

MULTILAYER CHIP CERAMIC CAPACITOR

• 插损曲线图
INSERTION-LOSS TYPICAL CHARACTERISTICS

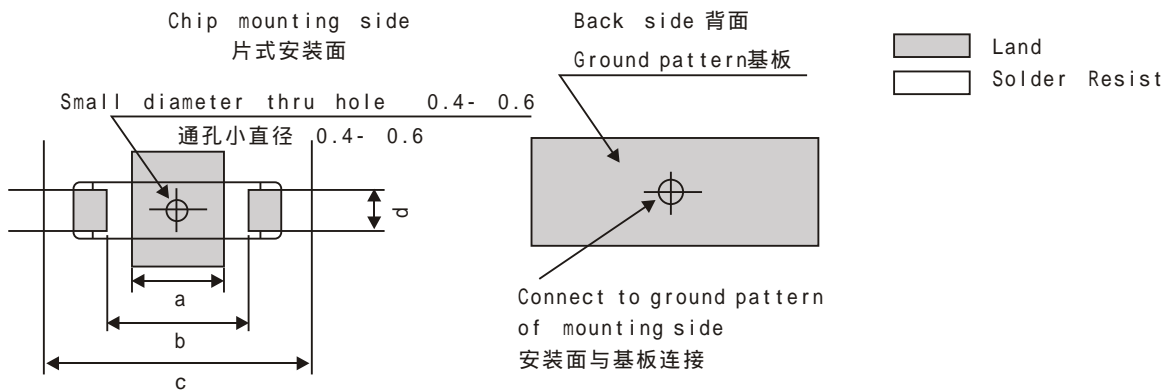


• 测试电路
MEASURING CIRCUIT



• 推荐PCB模型
RECOMMENDED PC BOARD PATTERN

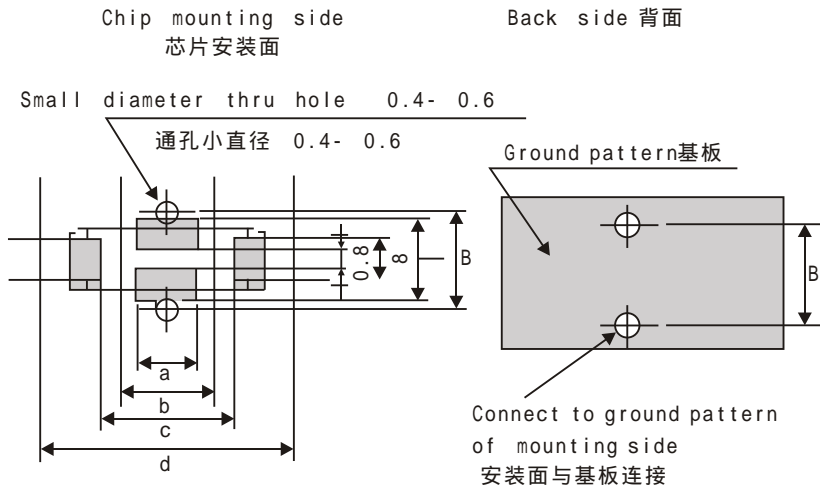
For Reflow Soldering回流焊接



| 规格 Part Number | 尺寸 Size(mm) | | | |
|-------------------|-------------|-----|-----|-----|
| | a | b | c | d |
| 0805 | 0.8 | 1.4 | 2.6 | 0.6 |
| 1205 | 1.4 | 2.5 | 4.4 | 1.0 |
| 1806 | 2.0 | 3.5 | 6.0 | 1.2 |



For Flow Soldering 波峰焊接



| 规格 Part Number | 尺寸 Size(mm) | | | | | | |
|-------------------|-------------|-----|-----|-----|-----|-----|-----|
| | a | b | c | d | e | f | g |
| 1205 | 1.0 | 1.4 | 2.5 | 4.4 | 1.0 | 2.0 | 2.4 |
| 1806 | 1.5 | 2.0 | 3.5 | 6.0 | 1.2 | 2.6 | 3.0 |

● 噪音抑制方案示例
EXAMPLES OF NOISE COUNTER MEASURE

* 目标Target :

- a. 抑制IC电源线上的噪音，消除电源线上的噪音，稳定IC的工作电压。
Restrains and eliminates the noise of the IC power supply line and make the voltage of IC to be stable.
- b. 抑制信号线上的幅射噪音：衰耗信号中多余的高频成分，阻止噪音的幅射。
Restrains the radiation noise of the signal lines. Wane the extra high frequency to prevent noise radiation.

